



TABLE OF CONTENTS

Section I

Transmittal Letter..... 3
List of Officials..... 4
Organizational Chart 5
Revenue and Expenditure Pie Charts..... 6

Section II

Staffing Table 7

Section III: Operating Budgets for 2020

Appraiser 11
Buildings & Grounds 13
Contingencies, Transfers & Subsidies..... 16
County Administrator 18
County Attorney 20
County Clerk 22
Elections 23
County Commission 25
Courts..... 27
Debt Service 29
Environmental Services.....
Environmental, Planning, Zoning..... 30
Solid Waste..... 31
Emergency Medical Services 36
Fairgrounds
Building Rentals 39
Fair 40
Fire & Emergency Management
Emergency Management..... 42
Fire 43
Communications Center 46
NG911 Fund..... 47
Health Services 48
IT..... 50
Other Budgets
Juvenile Detention 52
Coroner 52





Courthouse 53

Public Works.....

 Road & Bridge 54

 Noxious Weed..... 57

Register of Deeds..... 60

Revenues..... 61

Sheriff 63

Special Revenue Funds.....

 Alcohol Programs 66

 Parks & Recreation 66

 Sales Tax - General 67

 Sales Tax - Health Care 68

Treasurer 69

Section IV

Five-Year Capital Plan 71

Section V

State Budget Forms 78





Commissioners, Elected Officials and Residents of Ellis County:

Welcome to Ellis County's budget for 2022. Ellis County's finances operate on a calendar-year basis. This budget was adopted by the County Commission on September 13th, 2021. It is primarily financed in large part by property tax collections (the first installment of which are due in December 2021). This budget will fund County operations from January 1, 2022, through December 31, 2022.

For 2021, Ellis County's assessed valuation (the value of property upon which taxes are levied) increased by approximately 4.3%. Meanwhile, due to the State's Revenue Neutral Rate calculations, the Board of County Commissioners chose to hold a public hearing to notify the public of the County's intention to exceed that rate. However, the goal was to keep the mill levy rate as close to the same rate as 2021 at 37.18 mills. This means the mill levy rate for 2022 is 37.395 mills.

Thanks to the public support a two countywide ¼ cent sales taxes were approved by the voters in a special election in 2020. With this additional revenue, Ellis County will be able to continue to maintain County services at the same levels, build cash reserves per County policy, and start to fund multiple capital projects.

The resulting budget includes \$22,236,887 in overall revenues, and \$24,409,882 in General Fund expenditures. You can see where the County's General Fund revenues are received from and where they are expended per department on page six of this document. This budget continues to include the revenue for the county-wide sales tax which will significantly help stabilize the County's long-term financial future.

Thank you for your interest in Ellis County's budget. If you have questions about the County's budget, please do not hesitate to contact the County Administrator's Office at 785-625-1061.



LIST OF COUNTY OFFICIALS

County Commissioners

District 1 Robert “Butch” Schlyer
District 2 Neal Younger
District 3 Joe Leroux

Elected Officials

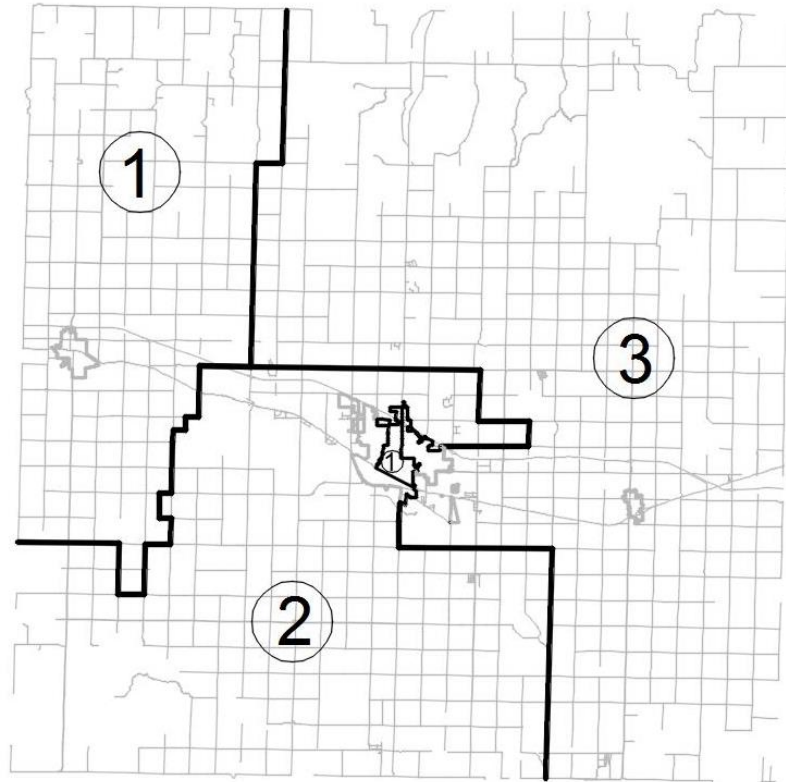
County Attorney Robert Anderson
County Clerk Bobbi Dreiling
County Sheriff..... Scott Braun
County Treasurer..... Vern Ruder
Register of Deeds..... Rebecca Herzog

County Administrator Darin Myers

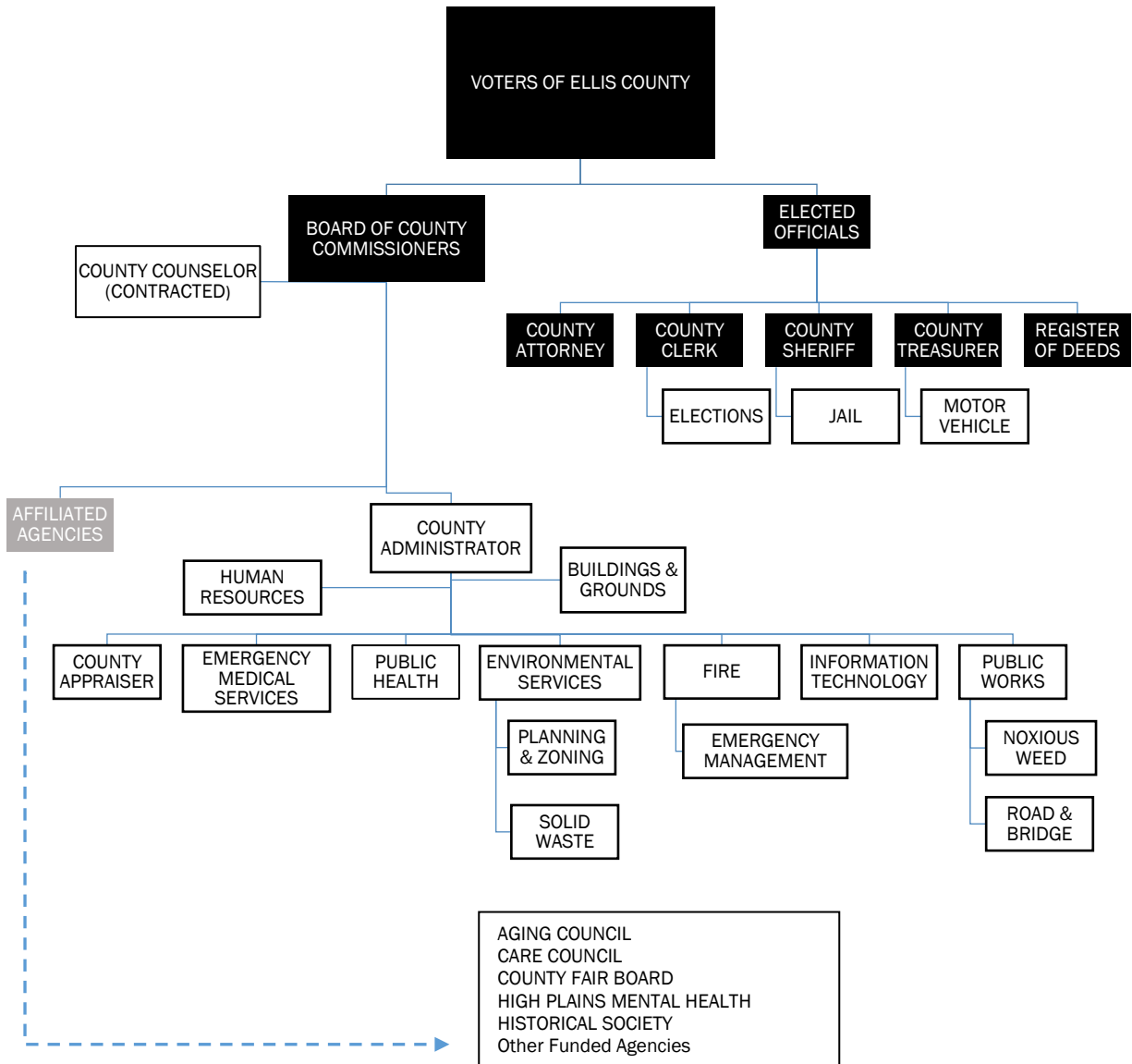
Appointed Department Heads

County Appraiser Lisa Ree
Environmental Services Director..... Justin Craig (Interim)
Fire & Emergency Management Director Darin Myers
Emergency Medical Services Director Danita Schroeder
Health Administrator..... Kim Reel
Information Technology Director..... Michael Leiker
Public Works Director Brendan Mackay

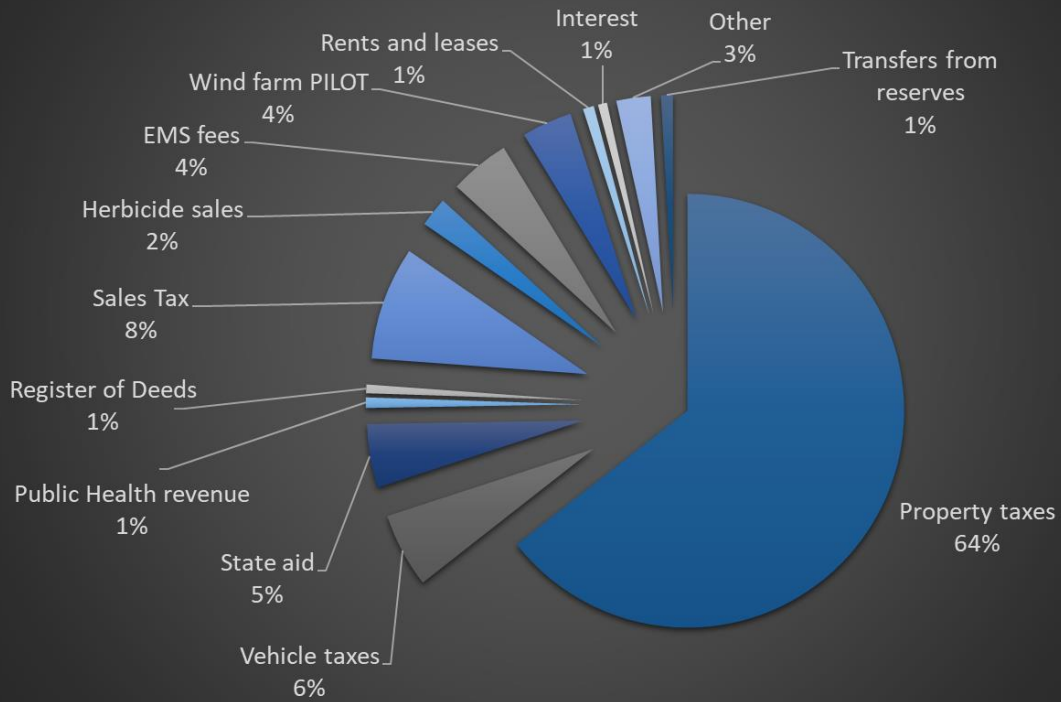
County Commission Districts:



ELLIS COUNTY ORGANIZATIONAL CHART



Where are the General Fund Revenues From?



Where the General Funds are Spent

