



TABLE OF CONTENTS

Section I

Transmittal Letter..... 2
List of Officials..... 3
Organizational Chart 4
General Fund Revenues and Expenditures..... 5
Revenue and Expenditure Pie Charts..... 6

Section II: Operating Budgets for 2020

Appraiser 7
Buildings & Grounds 9
Contingencies, Transfers & Subsidies..... 11
County Administrator 12
County Attorney 14
County Clerk 16
Elections 17
County Commission 19
Courts..... 21
Debt Service 23
Environmental Services.....
Environmental, Planning, Zoning..... 24
Solid Waste..... 25
Fairgrounds
Building Rentals 30
Fair 31
Fire & Emergency Management
Emergency Management..... 33
Fire 34
Communications Center 37
NG911 Fund..... 38
Health Services
Health Department 39
Emergency Medical Services 40
IT..... 43
Other Budgets
Juvenile Detention 45
Coroner 45
Courthouse 46
Public Works.....
Road & Bridge 47
Noxious Weed..... 50
Register of Deeds..... 53





Revenues.....	54
Sheriff	56
Special Revenue Funds.....	
Alcohol Programs	58
Parks & Recreation	58
Sales Tax - General	59
Sales Tax - Health Care	60
Treasurer	61
Section III	
Staffing Table	63
Section IV	
Five-Year Capital Plan	67
Section V	
State Budget Forms	74





Commissioners, Elected Officials and Residents of Ellis County:

Welcome to Ellis County's budget for 2021. Ellis County's finances operate on a calendar-year basis. This budget, adopted by the County Commission on August 10, 2020, and financed in large part by property tax collections (the first installment of which are due in December 2020), funds County operations for January 1, 2021, through December 31, 2021.

For 2021, Ellis County's assessed valuation (the value of property upon which taxes are levied) decreased by 3.5%. Meanwhile, in consideration of the state property tax lid, the Board of County Commissioners chose not to increase property taxes to the limit of the property tax lid for 2021. This means the mill levy rate for 2021 will stay the same as it was in 2020 at 36.910 mills.

Thanks to the public support a two countywide ¼ cent sales taxes were approved by the voters in a special election in 2020. With this additional revenue, Ellis County will be able to continue to maintain County services at the same levels, build cash reserves per County policy, and start to fund multiple capital projects.

The resulting budget, which includes \$23,939,242 in General Fund expenditures. It is also anticipated to have an additional \$2,531,424 in budget authority projected to roll into 2022. You can see where the County's General Fund monies come from and where they go on page 5 of this document.

This budget includes additional revenue for the new sales tax which will significantly help stabilize the County's long-term financial future. A multi-year projection reveals the County will be able to regain to its 25% unreserved general fund balance by the end of 2022.

Thank you for your interest in Ellis County's budget. If you have questions about the County's budget, please do not hesitate to contact the County Administrator's Office at 785-628-9410.



LIST OF COUNTY OFFICIALS

County Commissioners

District 1 Robert “Butch” Schlyer
District 2 Neal Younger
District 3 Dean Haselhorst

Elected Officials

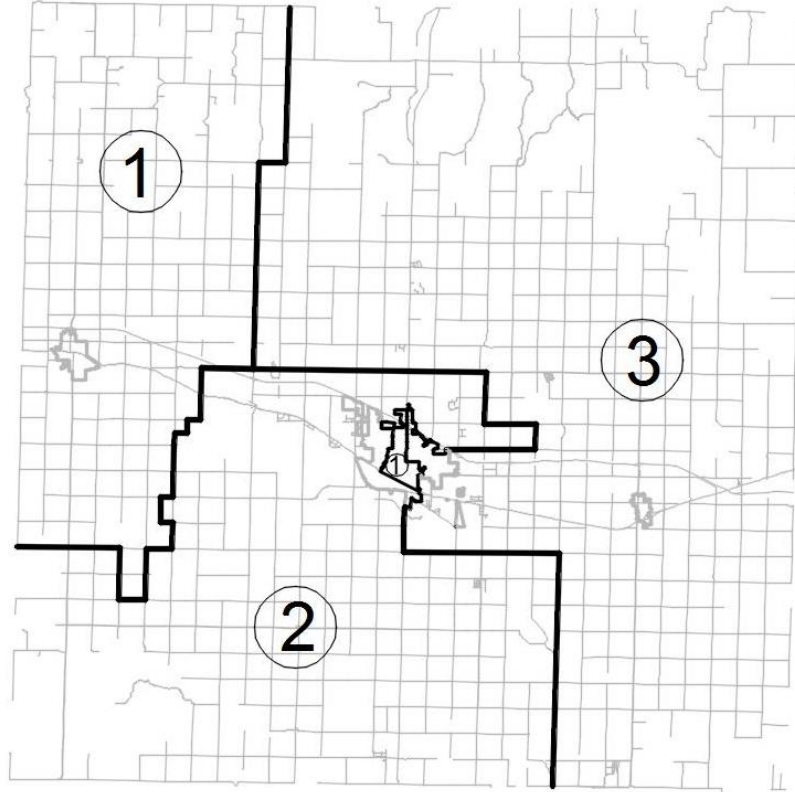
County Attorney Robert Anderson
County Clerk Bobbi Dreiling
County Sheriff..... Scott Braun
County Treasurer..... Lisa Schlegel
Register of Deeds..... Rebecca Herzog

County Administrator Darin Myers (Interim)

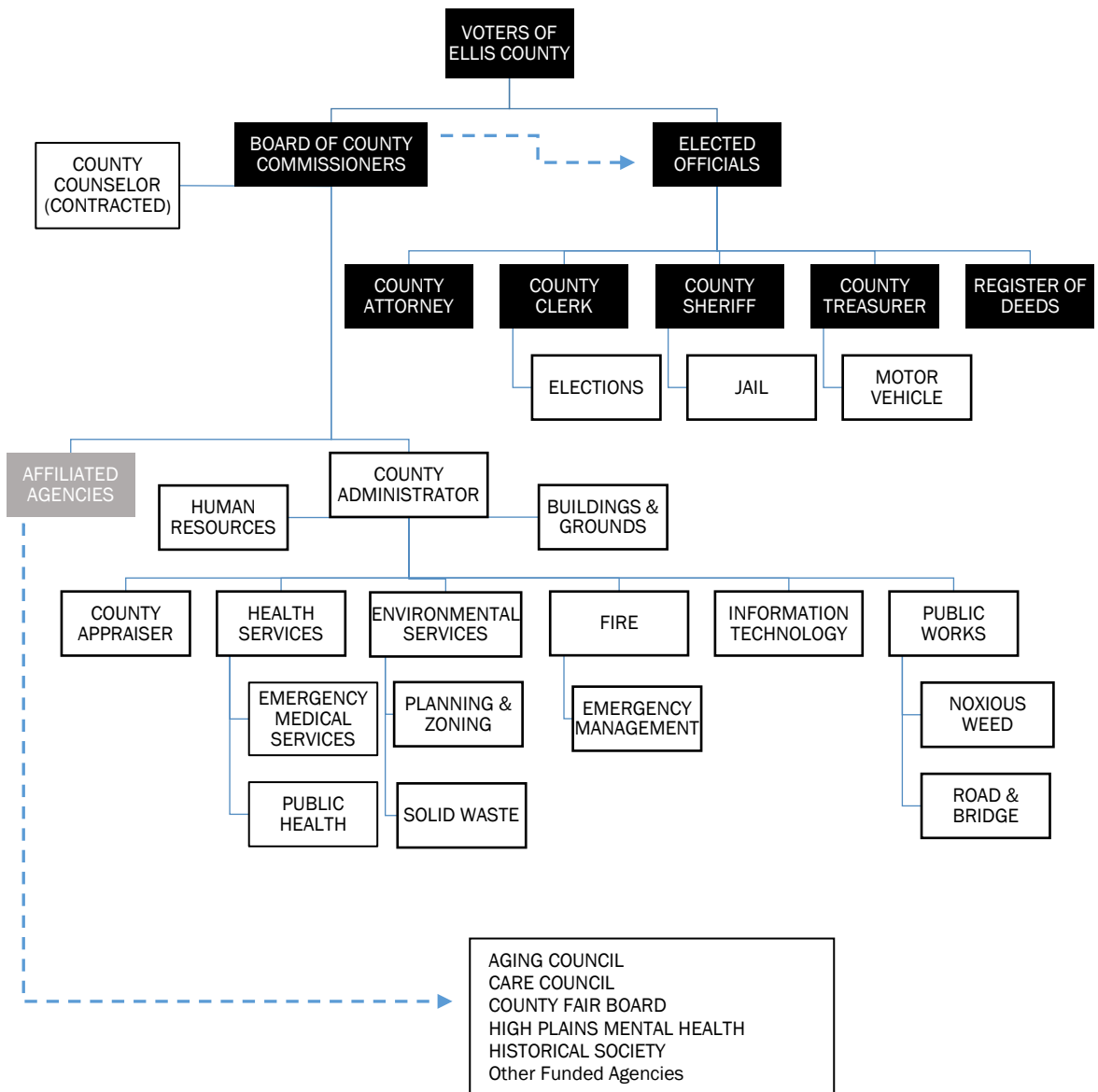
Appointed Department Heads

County Appraiser Lisa Ree
Director of Fire & Emergency Management..... Darin Myers
Health Services Director Jason Kennedy
Information Technology Director..... Michael Leiker
Public Works Director Brendan Mackay

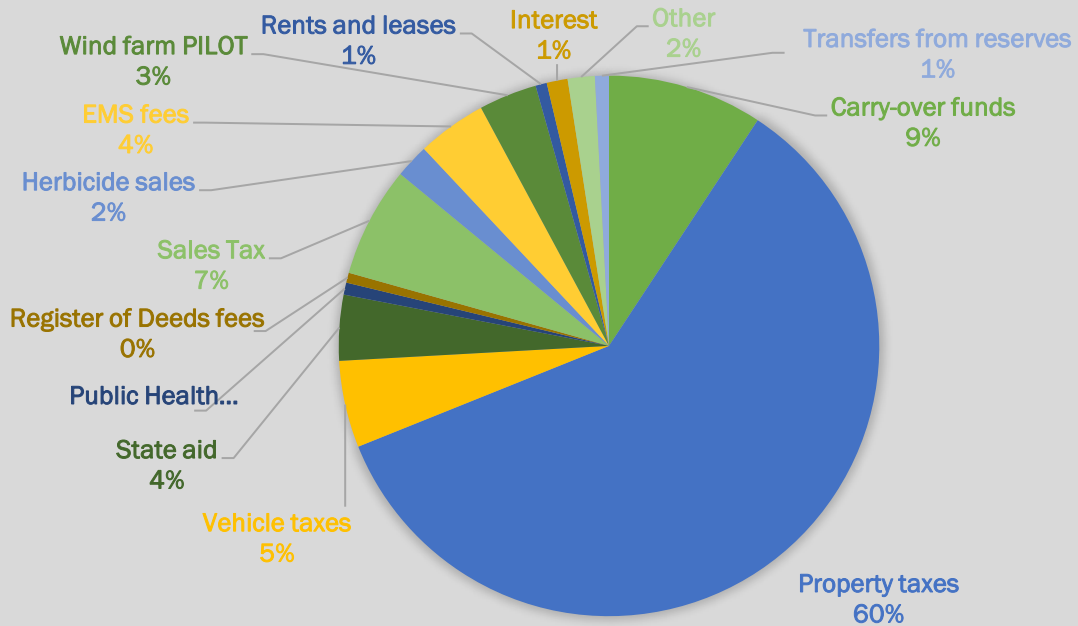
County Commission Districts:



ELLIS COUNTY ORGANIZATIONAL CHART



WHERE THE GENERAL FUND MONEY COMES FROM



WHERE THE MONEY GOES

